

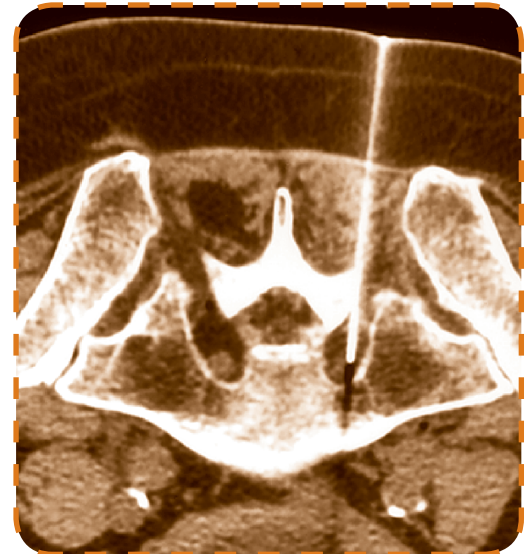
Welcome to Via Radiology

Via Radiology is a community based radiology group that has been in practice for more than 35 years. We are committed to providing the highest quality diagnostic imaging and image-guided therapeutic services for the Puget Sound region.

Via Radiology is dedicated to merging the highest professional standards and advanced technology with a patient-centered approach. The physicians and staff at Via Radiology provide our patients with personalized, comfortable and appropriate care.

The role of the radiologist has become increasingly vital as imaging technology has allowed important advances in the diagnosis and treatment of disease. Radiologists at Via are specialty-trained physicians, who have gained considerable expertise in the field of radiology, ensuring that you will receive the finest and most technologically advanced care available. In addition to standard training requirements, our board-certified radiologists have all obtained sub-specialty fellowship training.

This patient information sheet is designed to guide you through your procedure. Please feel free to ask our staff of professionals for help with any additional questions or concerns.



About Interventional Radiology Procedures

Interventional Radiology procedures are performed using image guidance on an outpatient basis at Via Radiology Meridian Pavilion.

The Interventional Radiologists at Via Radiology are all fellowship trained, and perform a variety of therapeutic procedures to treat pain symptoms. These include: **Epidural Steroid Injection**

(ESI), Facet Joint Injection, Selective Nerve Root Block, Sacroiliac Joint Injection (SJI), Hip Injection, and Trigger Point Injection.

Image guidance allows the medication to be injected precisely where you need it to treat your symptoms. The injections are performed using thin needles under local anesthesia. They are quick, safe, and well tolerated.

Before Your Procedure

Please wear loose and comfortable clothing. Once you arrive, you may be asked to change into the appropriate clothing for your exam. For your safety and comfort, it is important for us to know in advance if you are breastfeeding or could be

pregnant. Please inform the staff if you are taking any blood thinners; such as Coumadin, Heparin, Plavix, Lovanox or aspirin. Additionally, please inform us of any allergies; including allergies to iodine, lidocaine, latex or steroids.

OUR LOCATION

11011 Meridian Ave N
Suite 101
Seattle, WA 98133

Phone: 206.306.1011
Fax: 206.306.1019

www.viaradiology.com

Epidural Steroid Injection (ESI)

An epidural steroid injection is a non-surgical way to decrease back pain, often associated with inflammation of nerve roots and swelling. The injection delivers a steroid medication and anesthetic directly into the epidural space in the spine.

Facet Joint Injection

Facet joints are located on the back of the spine on each side where one vertebrae slightly overlaps the adjacent vertebrae. They help guide and restrict movement of the spine. A facet joint injection involves injecting an anesthetic and steroid medication into the joint to help decrease pain commonly associated with arthritis or back injury.

Selective Nerve Root Block

A nerve root block is performed to determine if a specific spinal nerve root is the source of pain and to help relieve pain. A needle is inserted through the skin into the area adjacent to the nerve root and medication, including an anesthetic and/or steroid is injected into the area.

Sacroiliac Joint Injection (SJI)

Sacroiliac joints are small joints located next to the spine in the low back and buttocks region. An injection involves injecting a steroid medication into the joint to help decrease pain and diagnose the source of pain.

Hip Injection

The hip joint is a large joint where the leg joins the pelvis. A hip joint injection involves injecting an anesthetic and/or steroid directly into the joint to help relieve pain and diagnose the source of pain.

Trigger Point Injection

A needle is injected into the trigger point and a local anesthetic or steroid is administered directly into the area to help relieve pain and diagnose the source of pain.

After Your Procedure

You will be discharged home immediately after the procedure and given instructions by your physician. Please bring a driver with you to the appointment. Please refrain from strenuous activity for 6 hours. After 6 hours, there is no additional activity limitation.

Dependant upon the procedure, the injection may increase your pain for 2-3 days. The pain can be treated by Tylenol or Advil (or prescription pain medication already prescribed by your referring physician), unless your physician has told you to avoid these medications. Should you have increased pain, you may apply ice to the area for duration of no more than 10-15 minutes each time, 4-5 times per day, as needed for pain.

Please call Via Radiology at 206.306.1011 if you experience pain unrelieved by the above medications. Patients who undergo epidural steroid injections should call us if you develop a continually worsening headache. A spinal headache rarely occurs, and can be treated quickly and easily by the Interventional Radiologist. We also would be glad to answer any questions that you may have following any of our procedures.

Our Location

We are located **11011 Meridian Avenue N.**, on the NW corner of Meridian Avenue N. and Northgate Way. Please see below for detailed driving directions or visit us at www.viaradiology.com. Plenty of free, on-site parking is available at our convenient location. **Via Radiology is located on the first floor of the Meridian Pavilion in Suite 101.**

